



Commodore Homes
INDIANA

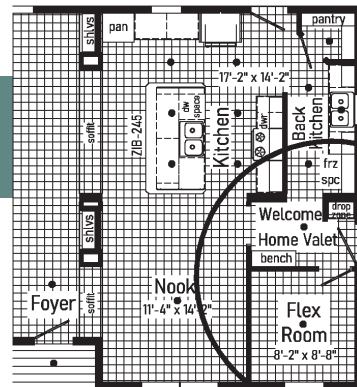


M
LANDMARK *Flex* **32**

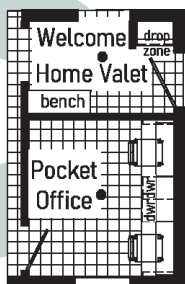
FLEX

THE EASY LIFE

- 1. The Back Kitchen** - The kitchen is where we entertain so the Back Kitchen is where the counter clutter goes (coffee maker, toaster, blender, etc.) Also cooking prep before and clean up after. Second freezer space for freezer or additional refrigerator since we never have enough storage for beverages.
- 2. Power Pantry** - How we shop today is in bulk. Power Pantry provides bulk storage and can reduce the need for kitchen overheads, allowing the kitchen to be more streamlined and contemporary.
- 3. Welcome Home Valet** - Entry into your home should be an inviting event. The Welcome Home Valet says - "Welcome home it's time to kick back and relax". This area provides a location to store your personal belongings (coat, purse, back-pack, shoes, cell phone, keys, etc). After a stressful day from work or school no one wants to enter past a stack of dirty laundry.
- 4. Connect Laundry** - Let's put the laundry where it makes the most sense; connected to the master closet and close to secondary bedrooms. Shorten the chores by taking clothes directly from the dryer to the closet or removing the wrinkles from that shirt for an evening event.



Pocket Office
 Busy households need a space everyone can use. Working from home or an area for the kids to do homework; the Pocket Office provides a private area to get away and concentrate on the task at hand or do some gaming without distracting others.



Work from Home

Winter Organizer
 Located directly off the Welcome Home Valet the Winter Organizer is a place for all your winter gear. Hunters have a place to store their camo and the kids have a place for snow gear to dry. Shelves for storing boots, scarves, hats & gloves, and a coat rod for coats, snow pants, and overalls. Keep everything in one place!



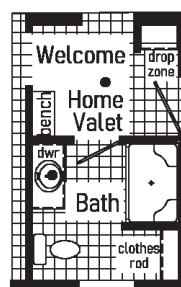
Winter Organizer

Entertainer
 For entertaining guests or family convenience the beverage center may serve as a coffee bar, beverage center, or for wine storage. It's a serve-self area for everyone.



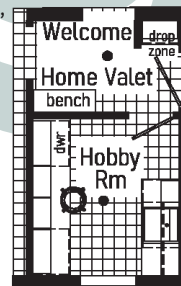
Entertainer

Clean-Up Crew
 Whether you're a mechanic, builder, farmer, or hard worker that just needs that place to clean up after a busy day of work. Located directly off the side entry the "Clean-Up Crew" bath provided a private bath to clean-up prior in entering into the common areas.



Clean-up Crew

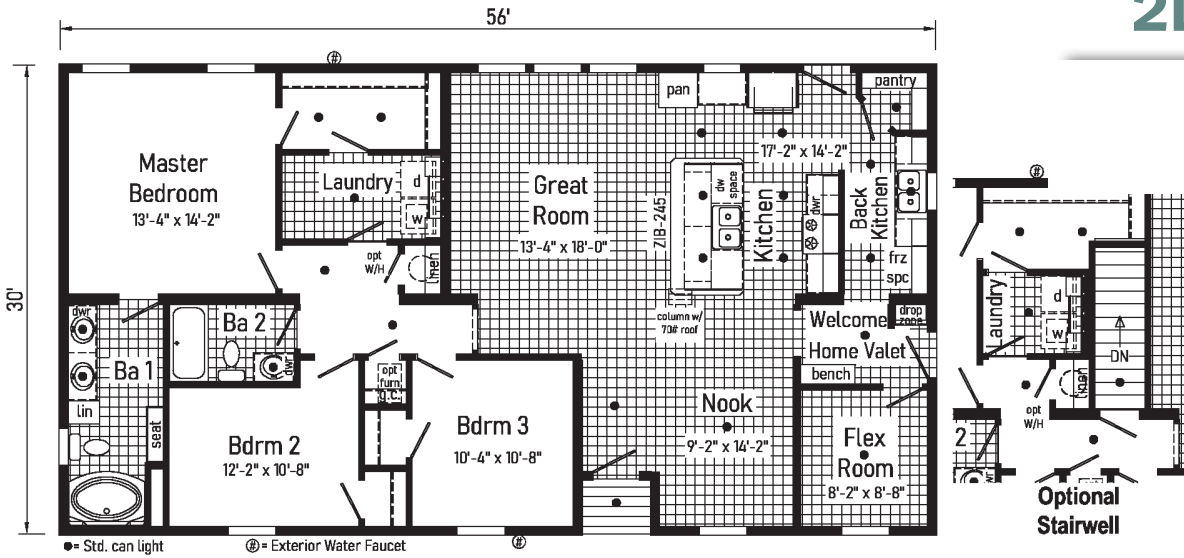
Hobbyist
 All hobbies require space! The Hobbyist offers countertop space for creating, cabinets for storing it all away, and a sink for rinsing molds, brushes, and more.



Hobbyist

So how can you get all those features without taking space from your home?
 Check out the Flex Room Options to meet YOUR Lifestyle.

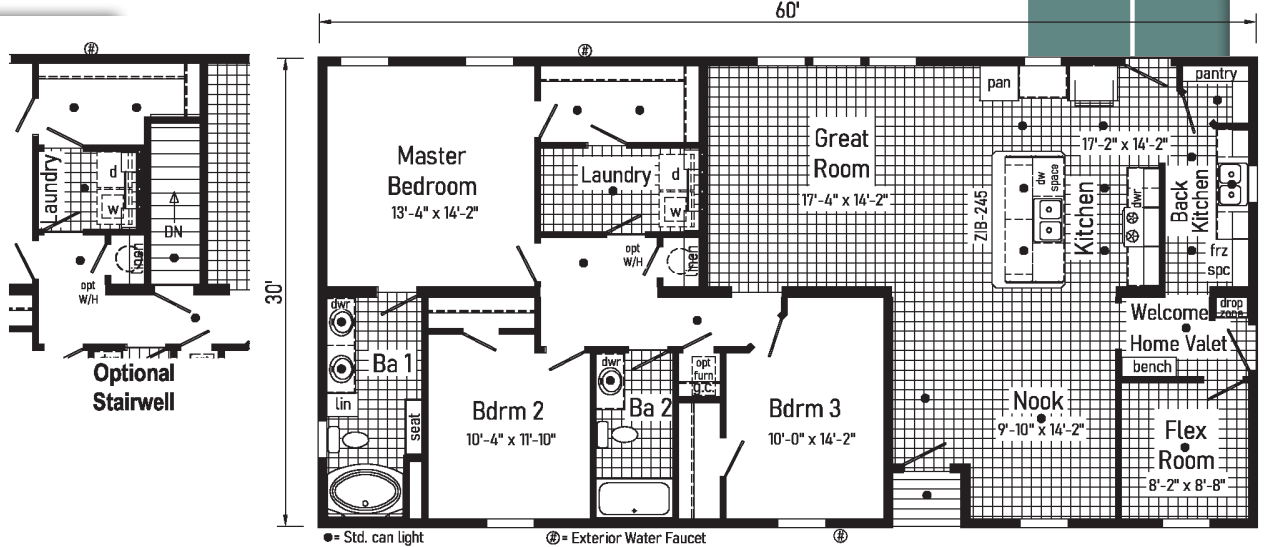
2LM2424-V



2LM2425-V

3260 Approx.
1784 sq.ft.

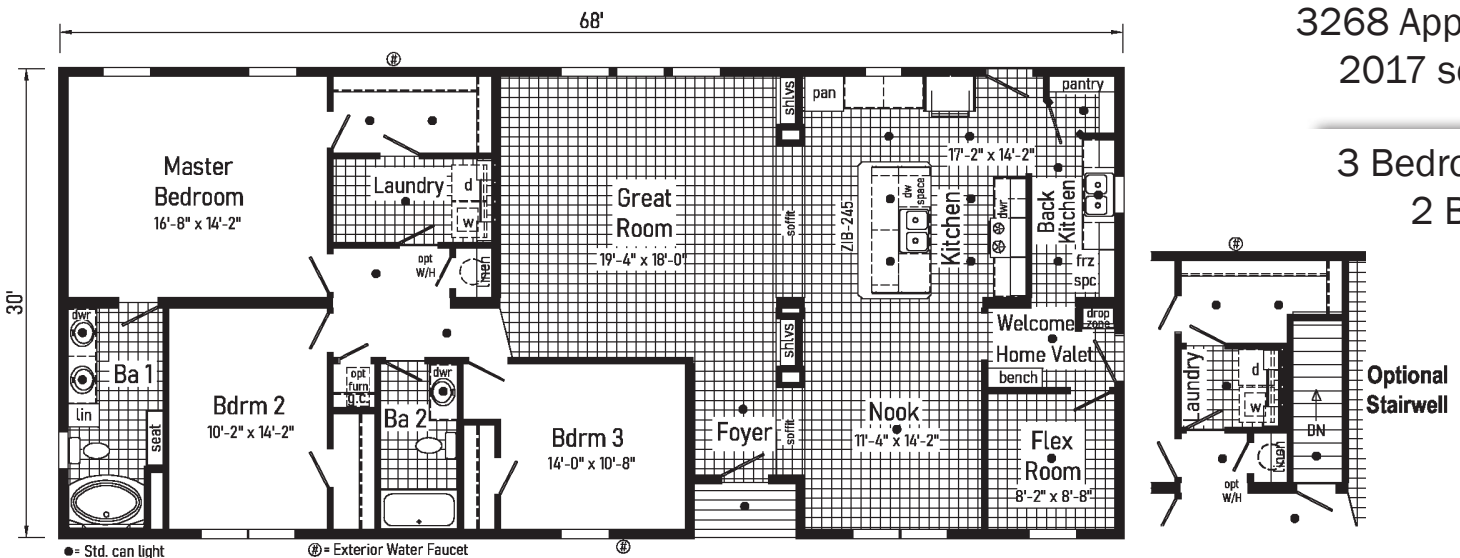
3 Bedroom
2 Bath



2LM2426-V

3268 Approx.
2017 sq.ft.

3 Bedroom
2 Bath





1902 Century Drive
Goshen, IN 46528
574-534-3067

Available Options:

- Basement Stairwell – Standard Location Only
- Shake It Up Carpet
- Matching Vinyl Transition Strip
- Luxury Vinyl Plank Shipped Loose Only
- 40 or 50 Gallon Electric Hot Water Heater
- Heating Package (Furnace, Return Air (No Trunk Lines Available) (Gas or Electric)
- Prep for On-Site Furnace Installation
- Prep for On-Site Water Heater Installation
- Ship Loose Duct Work for Furnace
- Additional LED Can Lights
- Wire and Switch for Fan
- Wire for Electric Range
- Extra Exterior Recept
- 60x32 Fiberglass Shower IPO Standard Garden Tub Master Bath or IPO Tub/Shower Bath 2
- Upgrade Insulation – Sidewall and Ceiling
- 4 Lite White Exterior Door
- 2 Panel 1/2 Glass with Internal Blinds
- Fire Door White
- Vinyl Sliding Glass Door
- Extra Shutters
- Optional Lineal IPO Shutters and Extra Lineal
- Market Square Siding
- 5/12 Roof Pitch 50# and 70#
- Pearl Appliance Package (Gas or Electric)
- SS Over the Range Microwave
- Prep for Microwave Over Range
- All State Required Codes

Note: Because of varying state requirements and optional equipment, some or all of the utility locations may change per floor plan. (i.e. furnace, stairwell, etc.) Consult your factory representative for exact specifications.

Your purchase contract including options is with your retailer who is an independent contractor, not our agent, and is responsible totally for any alterations, exchanges, additions or attachments made in or to your home.
CH 6/22

All descriptive representations of the products on this brochure are believed to be correct at the time of publication. However, due to continued product improvement and changes in suppliers design and production, accuracy cannot be guaranteed. Therefore, equipment colors, material specifications, prices and model availability are subject to change without notice.
All information and images contained in this brochure are property of Commodore Homes and for the use by active dealers of the company only. ©

