



Commodore Homes of Indiana

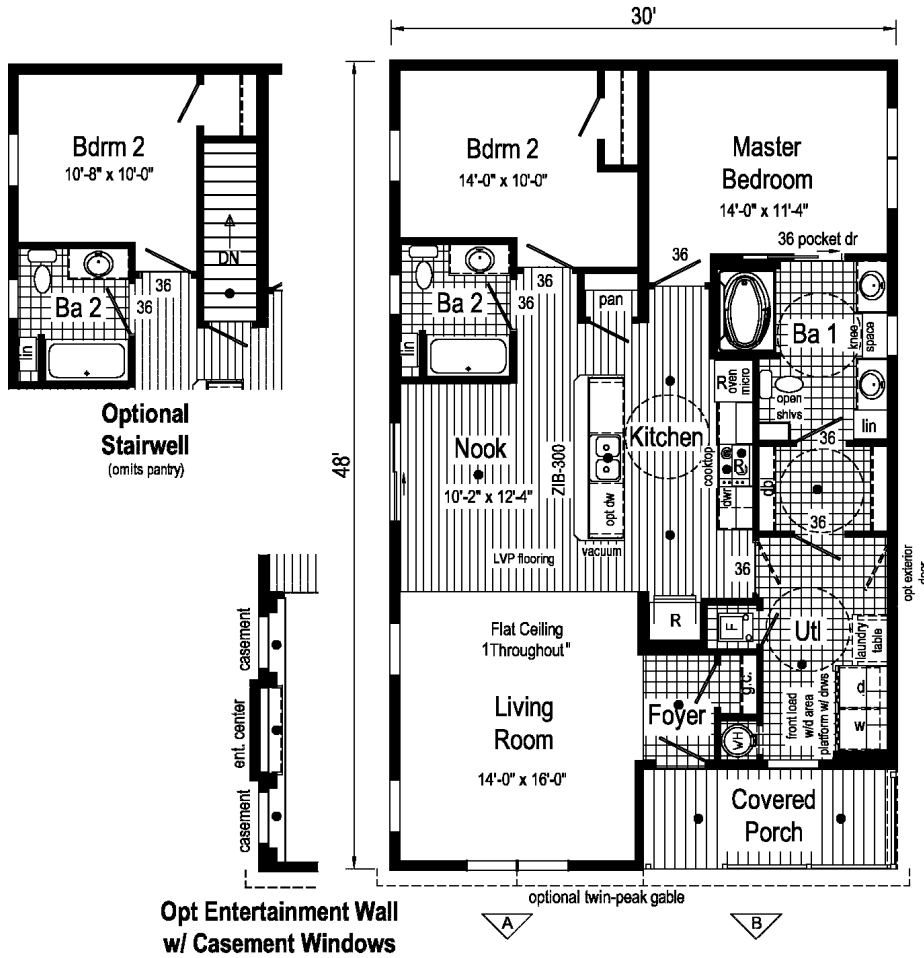


**M**  
LANDMARK *Forever*

# Forever 2

2LM2301-V

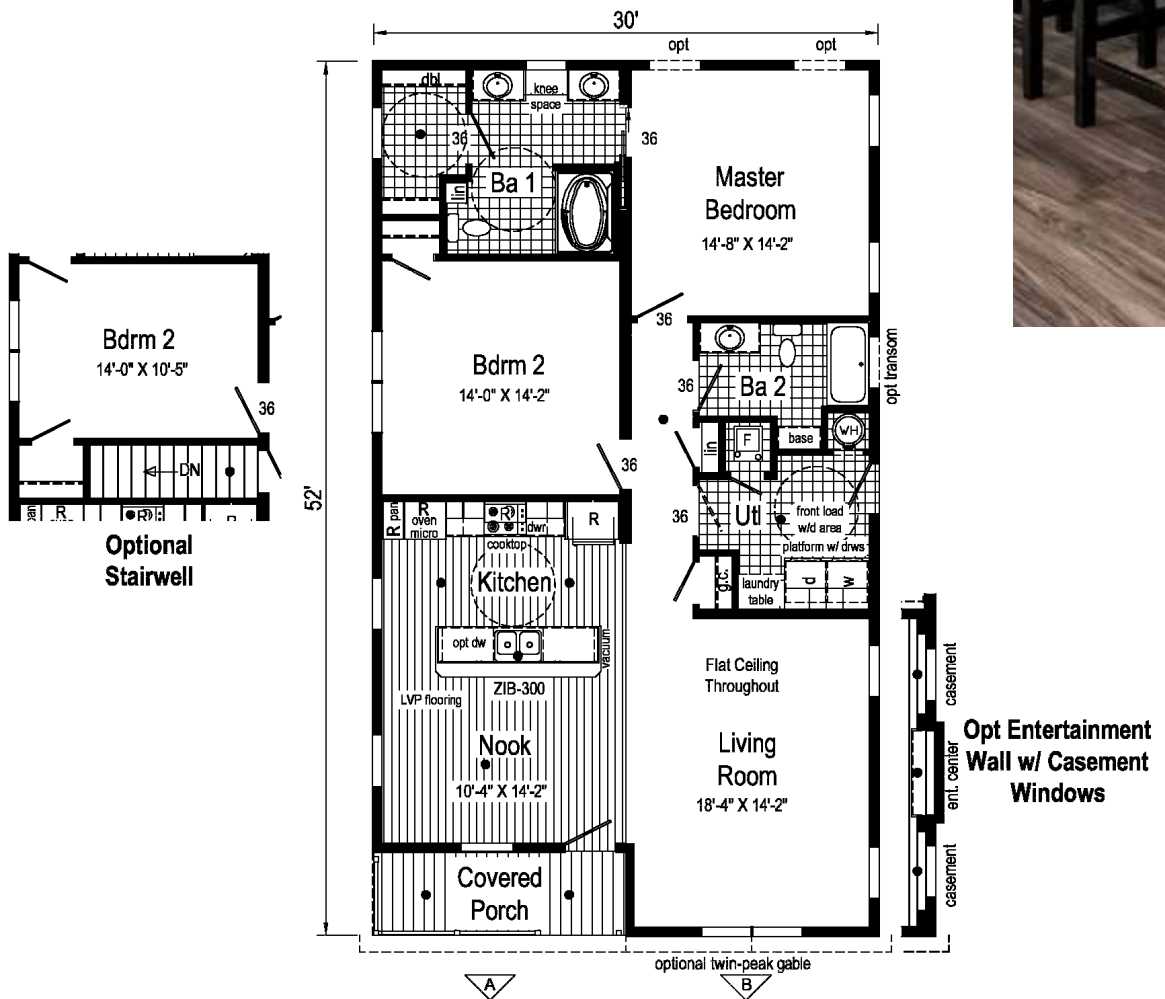
3248 - 1350 sq. ft.





# Forever 3

2LM2302-V  
3252 - 1485 sq. ft.

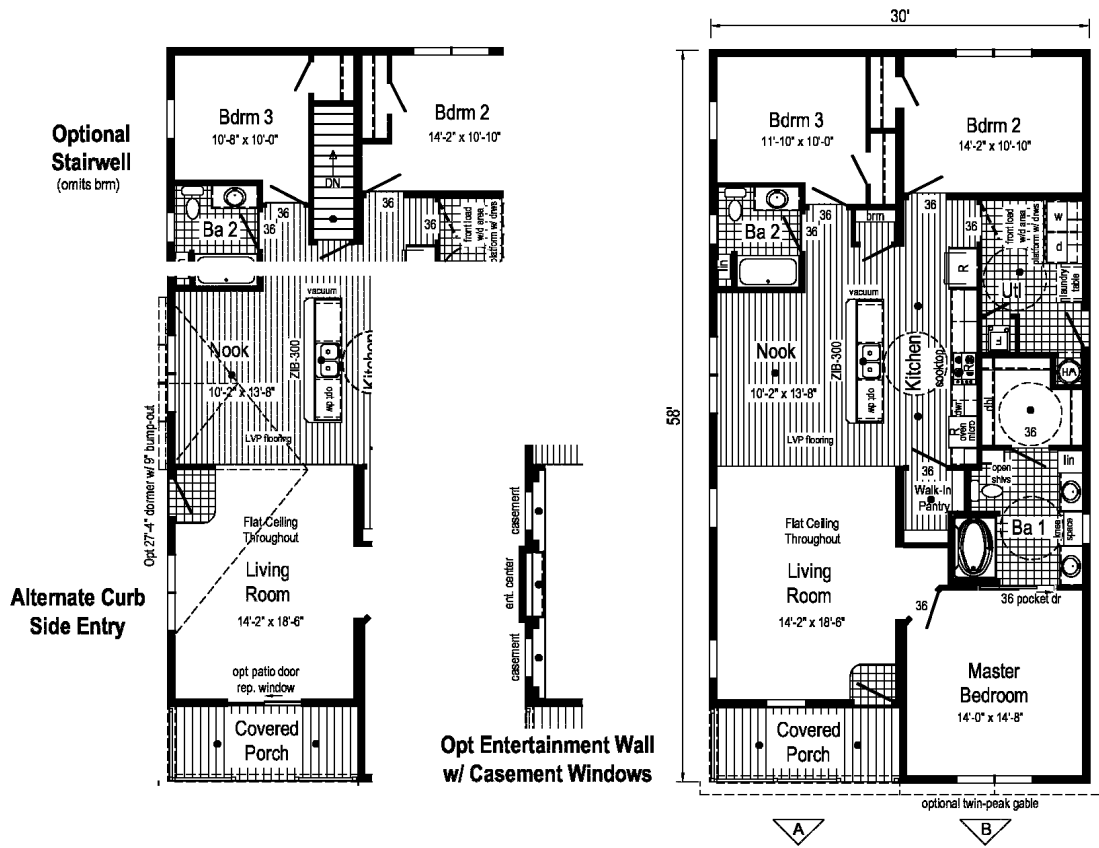




# Forever 5

2LM2303-V

3258 - 1650 sq. ft.





## Designed for Aging in Place

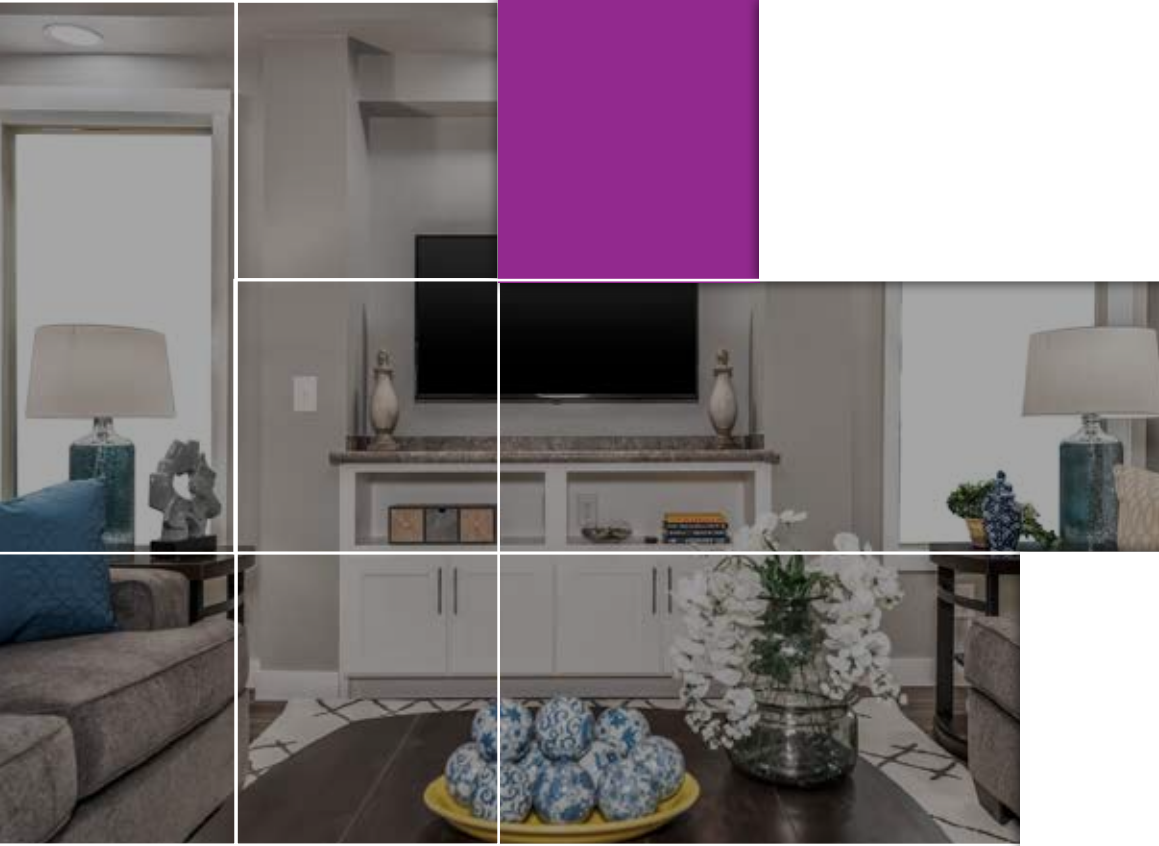
- \*60" Mobility Spaces
- \*Elevated Elongated Toilet in Master Bath
- \*Pocket Door at Master Bath
- \*Double Shelves in Master Closet
- \*36" Passage Doors Throughout
- \*Vinyl Plank Flooring in Kitchen & Nook
- \*Sweep-o-Vac in Kitchen Island
- \*Front Load Laundry Center
- \*Lever Passage Set Doors
- \*Wall oven
- \*Surface Mount Cooktop



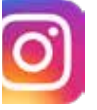
Scan to Watch



# Commodore Homes of Indiana



Connect with Us:



[www.commodore-in.com](http://www.commodore-in.com)

1902 Century Drive  
Goshen, IN 46528  
574-534-3067

Your Independent Builder is:



[www.commodore-in.com/inhouse-experience](http://www.commodore-in.com/inhouse-experience)

**Note:** Because of varying state requirements and optional equipment, some or all of the utility locations may change per floor plan. (i.e. furnace, stairwell, etc.) Consult your factory representative for exact specifications.

Your purchase contract including options is with your retailer who is an independent contractor, not our agent, and is responsible totally for any alterations, exchanges, additions or attachments made in or to your home.  
AP118074 5M 12/17

All descriptive representations of the products on this brochure are believed to be correct at the time of publication. However, due to continued product improvement and changes in suppliers design and production, accuracy cannot be guaranteed. Therefore, equipment colors, material specifications, prices and model availability are subject to change without notice.  
All information and images contained in this brochure are property of The Commodore Corporation and for the use by active dealers of the company only. ©